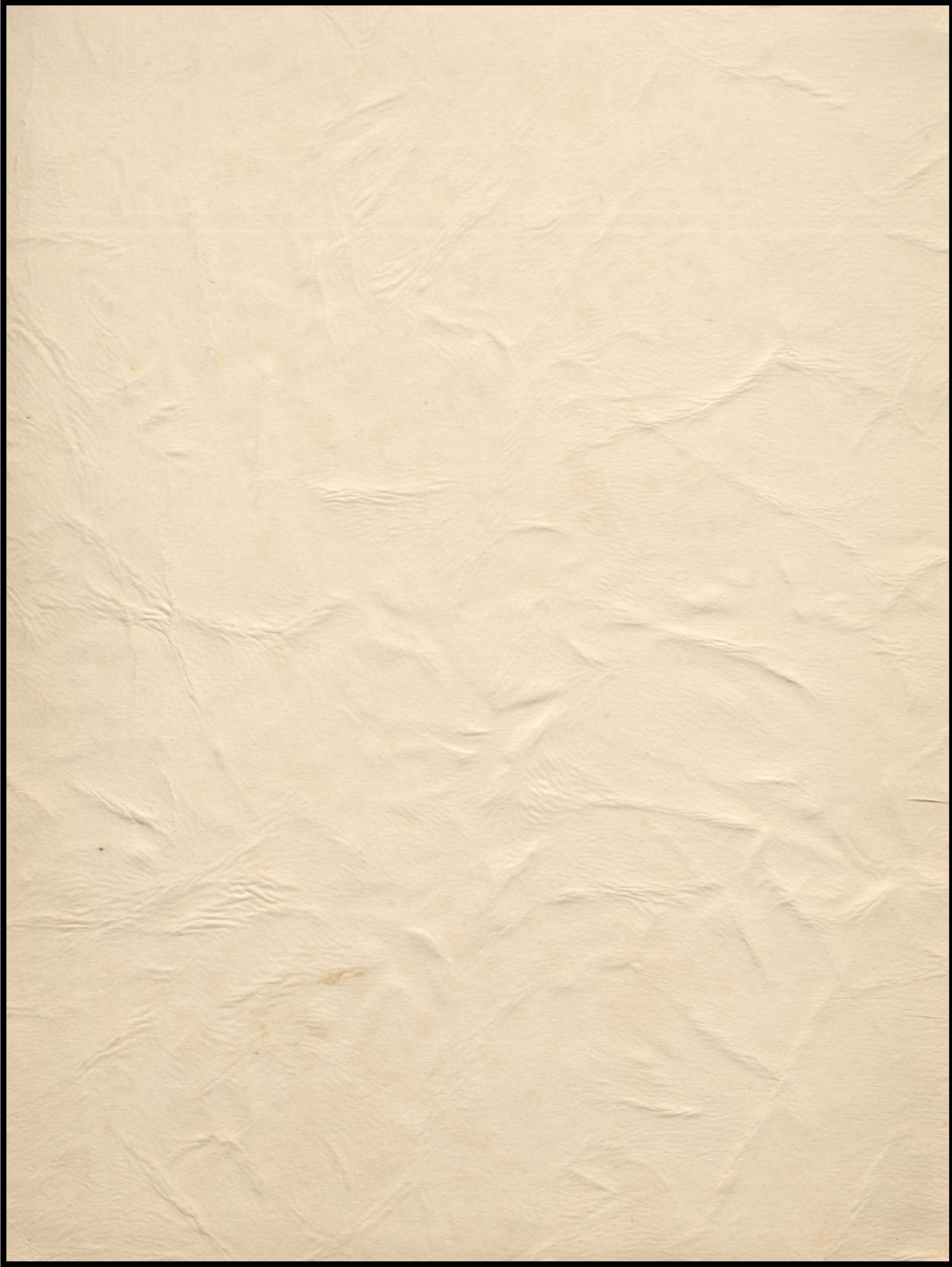


# BETHI

'37





The  
Betohi  
1937

»«

Published by

The Senior Class

of

Bement Township High School





*Where Work is Fun . . . .  
. . . . and Study is Play*

BOARD OF EDUCATION

T. W. Lamb, Pres.

W. G. McPherson

R. R. Siders

A. L. Wilkinson

O. E. Wright

Byron Dyarman

J. O. Fisher



## Dedication

▲ To show in a small way, our gratitude for the effort that has been put forth, the sacrifices that have been made, and the moral support and cooperation given to help us secure a high school education, we, the Seniors of Bement Township High School, do respectfully dedicate this book to our parents.





## Betohi Staff

EDITOR-IN-CHIEF	Mary M. Fleming
ASSISTANT EDITOR	Josephine Lefever
BUSINESS MANAGER	Joe Rittenhouse
CLUB REPORTER	Ruth Fay
MUSIC EDITOR	Mary Frances Vance
SPORTS	Len Conway
FEATURE EDITORS	Marjorie Stuber, Donald Resler
CLASS REPORTERS:	
JUNIORS	Mary Cornelius
SOPHOMORES	Edward Farrell
FRESHMEN	Hollis Stout
TYPISTS	Sybil Romack, Geraldine Shaw
ADVISORS	Miss Isabelle Houston, Mr. Edwin Snavelly

▲ Early in September the question was brought up of the possibilities of publishing an annual in B. T. H. S. The following committee was appointed to make investigations: Mary Margaret Fleming, Chairman; Mary Frances Vance and Joe Rittenhouse.

This committee discussed the problem with numerous publishing companies, and also with advisors of several schools that had published yearbooks.

They found that a good book could be put out at a reasonable cost, so after they had presented their report to the seniors, and that class had decided to sponsor the project, the committee laid plans for a sales campaign. It was decided that the best policy to avoid financial difficulties was to get the money, and then spend it.

The seniors were divided into two teams. They agreed that the team which sold the most books was to be given a party by the losers.

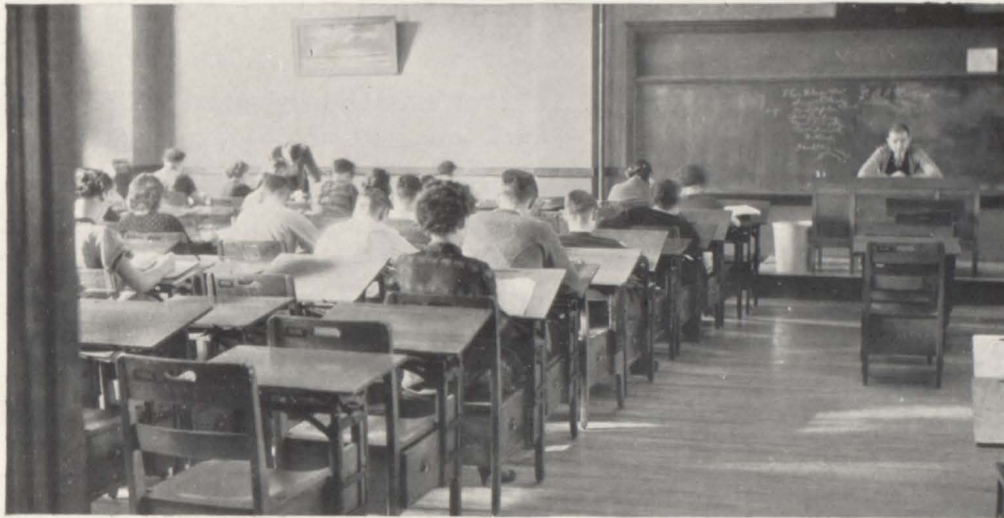
At the close of the race the returns showed that one hundred sixty-three books had been sold. This seemed a safe amount to start with, so a committee was appointed to choose nominees for the staff. When this matter had been disposed of, contracts were drawn up and work began in earnest. The class voted to name the book the Betohi. This is a traditional name in our school; it is derived from the words BEment TOWnship High.

We staff members have put in a lot of time on this project. All of us found our jobs entirely different from anything we had ever before done. We feel that we have gained something by our labors — that it has been time well spent.

We hope that we have paved the way for future yearbooks, but above all we hope that you enjoy our finished product. We are proud to present THE 1937 BETOHI.



## The School





**H. E. Slusser**  
Superintendent

• ▲ •

With the graduation of the class of 1937 Mr. Slusser will complete his tenth year as superintendent of the Bement schools. During these years he has built up and maintained a high standard of discipline and education for which Bement is known to all her neighbors.

His vital interest in the students as individuals, his cooperation in all of our undertakings, his high ideals of sportsmanship, and his good-natured attitude toward the lighter side of school life — these are a few of his characteristics for which we all respect him highly.

To us it has been a privilege to have spent so much of our school life under his guidance.

A small, stylized decorative flourish or signature mark.



# The Faculty

## EDWIN SNAVELY

Good nature is stronger than tomahawks.  
University of Illinois — B.S.  
Summer Courses:  
Columbia — '36  
Coach  
Physiology and Physical Education

## LOWELL A. HODAM

His talking is the classes' delight.  
University of Illinois — B.S.  
Summer Courses:  
U. of Illinois — '35 - '36  
Agriculture

## RUTH R. PONDER

We like her for what she is.  
Illinois State Normal  
University of Illinois  
James Millikin — B.S.  
Home Economics

## HOMER FIELDS

Dignified? — Until you know him.  
Southern Ill. N. U. — B. Ed.  
University of Illinois — M.A.  
Assistant Coach  
Social Science

## PEARL SWAIM

Nothing is so contagious as a good example.  
Franklin College — B. A.  
Summer Courses:  
Wheaton — '34 - '35  
Latin and English

## RUBY BUSICK

She has those qualities upon which friendship depends.  
Graduate from Bement Township High School — '32  
Secretary

## ISABELLE HOUSTON

Life has no blessing like a prudent friend.  
Monticello Seminary  
University of Illinois — B.A.  
Summer Courses:  
U. of California — '26  
U. of Colorado — '34  
English

## ELOISE SHAW

A good laugh is sunshine in a house.  
Illinois Wesleyan  
University of Illinois — B.S.  
Summer Courses:  
Columbia — '36  
Mathematics and Physical Education

## GUY A. DAVIES

Wise men argue causes.  
Southern Ill. Normal U.  
University of Illinois — M.A.  
Summer Courses:  
U. of Illinois — '35  
Science

## FRANCES CHOYCE

Ready for a good time at all times.  
I. S. N. U. — B. Ed.  
Summer Courses:  
Columbia — '35 - '36  
Commerce

## ALDEN H. TRICKEY

Great effects come of industry and perseverance.  
University of Illinois School of Music — B. S. in Music Education.  
Music



# Seniors

JOHN MARKER  
"Johnnie"

You've got to be a football hero. Class president 1; Track 1; Football 1, 2, 3, 4; Varsity 2, 3, 4; Captain of Football 4; F. F. A. 1, 2, 3, 4; "B" Club 1, 2, 3; Basketball Mgr. 4.



JULIA ANN DOBSON  
"Annie"

The value of jewels is not measured by size. L. O. V. 1, 2; Glee Club 1; Home Ec. Club 4.

MARGARET HENDRIX  
"Mar"

She looked at us and then she sighed; She's the only Senior that's dignified. L. O. V. Club 1, 2; Glee Club 1; Betohi News Staff 4; Class Secretary-Treasurer 4.



DON RESLER  
"Sarge"

What has been, has been, and I can nothing say. Glee Club 1, 2, 3, 4; Band 1, 2, 3, 4; Orchestra 1, 2, 3, 4; Operetta 1, 2, 3, 4; Football 1; F. F. A. 1, 2; Betohi News Staff 2; Betohi Staff 4; Senior Play 4.

DONOVAN WILDMAN  
"Hob"

A youth light-hearted and content. Operetta 1, 2; Wig and Scroll Club 1, 2; Junior Play 3.



MARJORIE MOERY

Silence is one great art of conversation. Glee Club 2; Home Ec. Club 1, 2, 3, 4; Style Show 2, 4.

SYBIL ROMACK  
"Sib"

Bashful? Well, maybe. Latin Club 1, 2; Home Ec. Club 2, 4; Style Show 2, 4; Betohi Staff 4.



HAROLD KIRK  
"Harry"

Built for comfort and not for speed. Cerro Gordo High School; F. F. A. 1, 2, 3; Track 1, 2, 3; News Staff 2, 3; Junior Play 3; B. T. H. S.—F. F. A. 4; Track 4; Athletic Board of Control 4; Football 4; Senior Play 4.

ROBERT MEDARIS  
"Bob"

When real love attacks, it is impossible to retreat. F. F. A. 1, 2, 3, 4; Orchestra 1, 2, 3; Band 1, 2, 3; Glee Club 1, 2, 3; Junior Play 3.



RUTH FAY  
"Ruthie"

A blush is beautiful but often inconvenient. Style Show 1, 2; Home Ec. Club 1, 2; Betohi News Staff 2, 3; Wig and Scroll 2, 3; Betohi Staff 4.



# Seniors

## BETTY ANDERSON

"Bett"

She is pretty to walk with, and witty to talk with.  
Glee Club 1; Wig and Scroll 1; Orchestra 1, 2, 3; Latin Club 1; Latin Club Secretary 1; Oratorical Contest 1; G. A. A. 2; Drum Major 2; Operetta 2; Band 3; Junior Play 3; May Queen Attendant 3; Candidate for Homecoming Queen 4; Senior Play 4.



## EUGENE LAMB

"Blondie"

Life is no longer if I hurry;  
The world is no better if I worry.  
F. F. A. 1, 2, 3, 4; Treasurer F. F. A. 4.



## EDITH PROCTOR

"Proc"

Nothing is impossible to a willing heart.  
Wig and Scroll 1; Betohi News Staff 3; G. A. A. 2, 3, 4.



## HOWARD LINDSTROM

"Swede"

A man of few words.  
F. F. A. 1, 2, 3, 4; President of F. F. A. 4.



## DOROTHY ARNOLD

"Dort"

Good cheer is no hindrance to a good life.  
Latin Club 1, 2; President Latin Club 2; Glee Club 1, 2; Operetta 1, 2; Wig and Scroll 2, 3; Oratorical Contest 2, 3; Betohi News Staff 2, 3; Debating Club 3.



## DON KITSON

"Kitty"

There's time enough; I'll do it when I'm old.  
Wig and Scroll Club 2; Glee Club 4; Operetta 4.

## FRANCES LEFEVER

"Fran"

Nice and neat and pleasing to meet.  
Wig and Scroll 1; Glee Club 1, 2; Operetta 1, 2; Home Ec. Club 1, 2, 3, 4; Style Show 1, 2, 3, 4; Senior Play 4.

## JOHN EDWARD MALKUS

"Jake"

Heart trouble, and more heart trouble.  
Band 2; Orchestra 2; Football 1, 2, 3, 4; Varsity 3, 4; F. F. A. 2, 3, 4; "B" Club 2, 3, 4; Basketball 1, 2, 3, 4; Varsity 2, 3, 4; Basketball Captain 3, 4; Vice-President of Class 4.

## FORESTINE PROBUS

"Frosty"

A smile a day keeps the frown away.  
Home Ec. Club 2, 3; Style Show 1, 2, 3; Glee Club 4; Operetta 4; Betohi News Staff 4.

## RALPH PFEIFFER

Who said gentlemen prefer blondes?  
Glee Club 2; Operetta 2; Football 2; F. F. A. 1, 2, 3, 4.

# Seniors

PHYLLIS PETERSON  
"Pete"

And when she laughs, the whole world laughs with her.  
Home Ec. Club 1, 2, 3; Style Show 1, 2, 3; Glee Club 1, 2; Operetta 1, 2; Junior Play 3; Betohi News Staff 4; Senior Play 4.

ROBERT GLENNON

Womer? I never heard of them.  
Glee Club 3; Operetta 3; F. F. A. 3, 4.

GERALDINE SHAW  
"Gerry"

She is gentle, she is shy, — but there is mischief in her eye.  
Glee Club 1, 4; Operetta 1, 4; Betohi Staff 4.

CHARLES BODY  
"Boody"

If work interferes with play — quit work.  
Football 1, 3, 4; F. F. A. 1, 2, 3, 4.

ROWENA CROOK

Faithful, gentle, and good, wearing the rose of womanhood.  
Glee Club 1; Band 3, 4.



JOE RITTENHOUSE

He is a likely man with ideas of his own.  
Band 1, 2; Orchestra 1, 2; Glee Club 1, 2; Operetta 1, 2; Secretary-Treasurer of Class 1; President of Class 2; F. F. A. 1, 2, 4; Senior Play 4.

MARY MARGARET FLEMING  
"Mary Mar"

If toil brings sorrow, you'll hear of me again.  
Band 1, 2, 3, 4; Orchestra 1, 2, 3, 4; Secretary-Treasurer of Orchestra 4; Glee Club 1, 2, 3, 4; Operetta 1, 2, 3, 4; President of Glee Club 3; G. A. A. 2, 3, 4; Secretary-Treasurer of G. A. A. 3; G. A. A. Play 4; Wig and Scroll 1, 2; L. O. V. 1; Okaw Oratorical Contest 1; County Oratorical Contest 1, 3, 4; Debating Club 3; Junior Play 3; May Queen Attendant 3; All-State Chorus 4; Betohi News Staff 1, 2, 3, 4; Betohi Staff 4; Senior Play 4.

WAYNE BRUNSON  
"Romeo"

He that hath a beard is more than a youth, and he that hath no beard is less than a man.  
Junior Play 3; Football 1, 3, 4; Glee Club 1, 2, 3, 4; Operetta 1, 2, 3, 4.

MARGUERITE MONAGHAN  
"Getee"

A maid of our century, yet most meek.  
Glee Club 1.

CHARLES TAYLOR  
"Chalk"

Slow and easy going, but he'll get there just the same.  
Basketball 1, 2, 3, 4; Varsity 4; Football 3, 4; Varsity 4; Track 4; F. F. A. 1, 2, 3, 4; District Poultry Judging Team 3; Alternate for State Poultry Judging Team 3; District Corn Judging Team, 4.



# Seniors

FRANCIS DOTY  
"Mose"

Never let studies interfere with your duties.  
Football 1, 2; Basketball 1, 2, 3, 4.



MARY FRANCES VANCE  
"Dolly"

Some may laugh and some may talk, but I do both forever.  
Band 1, 2, 3, 4; President of Band 3, 4; Orchestra 1, 2, 3, 4; Glee Club 1, 2, 3, 4; Operetta 1, 2, 3, 4; Latin Club 1; G. A. A. 2, 3, 4; Secretary of G. A. A. 2; President of G. A. A. 4; Play 4; Wig and Scroll 1; Home Ec. Club 2; Secretary of Home Ec. Club 2; Oratorical Contest 3, 4; Betohi News Staff 4; Betohi Staff 4; Senior Play 4; May Queen 3.



JOHN NEAL  
"Knute"

His limbs are cast in manly mould.  
Football 1, 2, 3, 4; Varsity 2, 3, 4; Basketball 1, 2, 3, 4; Glee Club 1, 2, 3, 4; Operetta 2, 3, 4; Wig and Scroll 2; Betohi News Staff 3, 4; Senior Play 4.



NELLIE POLLARD  
"Lil"

A giggle, a clash, a shriek, a crash.  
Home Ec. Club 2; Glee Club 1, 4; Operetta 1, 4; Senior Play 4.



JUNIOR MOERY  
"June"

Good sense and good looks — both are gifts of God.  
Football 1, 2, 3, 4; Varsity 3, 4; Basketball 1, 4; Varsity 4; Operetta 1, 2; Class President 3; District Solo Contest (Trombone) 2, 3, 4; State Solo Contest (Trombone) 2, 3, 4; Senior Play 4.



ROBERTA CARTER  
"Bobby"

What sweet delights a quiet life affords.  
Latin Club 1; Home Ec. Club 2; Glee Club 1, 2, 4; Operetta 1, 2, 4.

JUNIOR RITTENHOUSE  
"Jiggs"

Jolly and popular and always the same.  
Glee Club 1, 2; Band 1, 2, 3; Orchestra 1, 2, 3; F. F. A. 1, 2, 3, 4; Grain Meet 2; District Corn Judging Team; Vice-President of Class 2; Junior Play 3; Class President 4; Senior Play 4; Operetta 1, 2; Delegate to State F. F. A. 1.

MARJORIE STUBER  
"Marj"

Whenever she speaks, a friend is gained.  
Glee Club 1, 4; Operetta 1, 4; Home Ec. Club 2, 4; Style Show 2, 4; Latin Club 2, 3; G. A. A. 3; Junior Play 3; Betohi Staff 4; Senior Play 4.

LEN CONWAY  
"Connie"

Little but mighty.  
Orchestra 1, 2, 3; Basketball 1, 2; Betohi Staff 4.

JOSEPHINE LEFEVER  
"Jo"

Liked here, liked there, liked everywhere.  
Home Ec. Club 1, 2, 3, 4; President of Home Ec. Club 3, 4; Style Show 1, 2, 3, 4; Glee Club 1, 2, 3, 4; Operetta 1, 2, 3, 4; Orchestra 2, 3, 4; Wig and Scroll 1, 3; Betohi Staff 4.



# Senior History

In the year 1933 A. D. fifty-three Freshmen cautiously mounted the steps of good old B. T. H. S. Among them were the eighth grade graduates of Bement Grade School, Milmine, and surrounding rural schools. The officers elected for the first year were as follows: John Marker, president; Virginia McGalliard, vice-president; Joe Rittenhouse, secretary-treasurer. We were very meek and quiet this year, as the Seniors and the upper classmen were constantly reminding us of our lowly position. We were often referred to with that horrible title, "those green freshmen." However, we did enjoy ourselves at a "kid party," which was quite appropriate for us "young ones." At the annual school picnic, Phyllis Petersen furnished some entertainment by falling off a boat into Lake Decatur. After being "abused" all year, we welcomed our three months vacation.

Next year we assumed our duties, a year older, a little wiser, and with a more secure feeling as we tried to assume that certain superior air so characteristic to upper classmen. Still the majestic Seniors tried to "put us in our places," but we were older, so we offered some resistance. Nothing eventful happened that year except that one day two fun-seeking girls tied up President Joe Rittenhouse's coat with twine string. The other officers that year were: Junior Rittenhouse, vice-president; Veldon Turner, secretary-treasurer.

We were certainly glad to gain the class title of Juniors. We felt as a separate organization, too superior to mingle with the lower classes and still feeling a bit of friendly rivalry toward the Seniors. That fall we gave a class play, "Skidding." Junior Moery, as class president, found that it was a great deal of work to lead a class in giving a class play and also in sponsoring the annual Junior-Senior banquet. He found able assistants in the persons of John Neal, vice-president, and Marjorie Stuber, secretary-treasurer. We had lots of fun at our banquet which was set in an old-fashioned garden. Since the date of this affair was the thirtieth of April, we planned it as a May Day banquet. We allowed the whole student body to vote for the May Queen. Dolly Vance, the winner, was crowned at the banquet. Three of her six attendants were Juniors. They were Betty Anderson, Mary Margaret Fleming, and Kathryn Cord. The last of our Junior year drawing to a close, we had better ability to assume more and heavier responsibilities. We began to look ahead, planning for future careers and work.

At last we reached that long-envied position of Seniors. The childish practice of teasing Freshmen did not seem so entertaining as in former years. We studied harder this year and our attitude was even more serious. Hard as the girls tried during their four years, they were unable to elect a girl as class president. But they are quite willing to recognize the efficiency of the presidents they have had. Junior Rittenhouse filled this office during our Senior year. John Malkus served as vice-president and Margaret Hendrix kept the books and the money.

Our class president was manager of the Home-coming and several original ideas were carried out. Our class was the first one since 1926 to publish an annual. In the spring of the year we entertained the Juniors at a party. We also gave the Senior play, "The Bat in the Belfry," the proceeds of which were used to buy an electric scoreboard for the gymnasium. We attended the Junior-Senior banquet on April 29, and also the all school picnic in the spring of the year with the sad thought in the back of our minds that it would be our last.

At last we have reached a vital turning point in life. We must part, each going his own way, taking up various occupations. So far those of our classmates who have roamed the farthest are Jerry Evans, who resumed his education in Los Angeles, California, and James Conley, who moved to Ochelata, Oklahoma. Those of us who started in the Bement Grade School and continued together for our twelve years of school life are: Marjorie Mcery, Don Kitson, John Edward Malkus, Nellie Pollard, Dorothy Arnold, Geraldine Shaw, Arthur Brunson, Len Conway, Mary Margaret Fleming, Junior Mcery, Phyllis Petersen, Edith Proctor, Junior Rittenhouse, Mary Frances Vance, Donovan Wildman, and Marjorie Stuber. Those starting in the Milmine school and continuing together are: Roberta Carter, Julia Ann Dobson, Frances Lefever, Josephine Lefever, and Charles Taylor. As now we approach the crossroad at which we must part, may each one experience much happiness and success through life.



In Memoriam

\*\*\*

*Elizabeth Winzenburger*

February 26, 1921

March 31, 1937



FIRST ROW: Marion Gardner, Blanche Day, Everett Abel, Mary Kathryn Hendrix, Jack Slevin, Ted Davies, Paul Fish, Forney Fuqua, Evelyn Prah, Elton Haynes, Wilma Jackson, Evelyn Larson. SECOND ROW: Catherine Phalen, Wilford Wildman, Miriam Lux, Billy Hill, Fern Lindstrom, Robert Funk, Phyllis Plummer, Robert Foran, Ruth Lamkin, Walter Bentley, Fulalia White. THIRD ROW: Robert Fisher, Mary Cornelius, Richard Jarboe, Grace McPherson, Leo Foran, Jane Camp, Robert Larson, Phyllis Metcalf, Gail Clapp, Maxine Kiser, June Turner. FOURTH ROW: Agnes Rvan, Elizabeth Winzenburger, Dick Glennon, Marjorie Bentley, Pauline Conlin, Laurine Conlin, John Wright, Marybelle Neal, Donet Tracy, Doris Winters, Robert Hendrix.

• • •

## Junior Class

In the fall of 1934 B. T. H. S. welcomed forty-eight strapping youngsters, who soon became accustomed to the routine of high school. They were we Juniors before we had attained our present dignity. Our first president was Ted Davies; our other officers were Ruth Lamkin, vice-president; Forney Fuqua, secretary and treasurer. With Miss Swaim and Mr. Engle as class advisors, we entered a field of honor and the classroom of study. After we had become thoroughly acquainted with each other, we held the annual Freshman weiner roast. We also enjoyed a Halloween party. For the first time we fully realized the meaning of semester exams.

Those who survived all exams or had not lost courage met again in the fall of 1935. Although our number was somewhat depleted, our spirits were undaunted.

We straightway elected John Wright, president; Paul Fish, vice-president; and Robert Funk, secretary and treasurer. Miss Steigman and Mr. Millikin acted as faculty helpers. Our boys did valiantly in the field of athletics both in placing men on the squad and in receiving letters. Other members of the class carried themselves high in music and oratory. We held two parties during this year.

And now with firm steps and stout hearts we took our places as Juniors, with Miss Choyce, Miss Ponder, and Mr. Hodam as class supervisors. We now hold an eminent place in the school and are determined to distinguish ourselves. We elected Paul Fish, president; Jack Slevin, vice-president; and Forney Fuqua, secretary and treasurer. First came football. Our letter winners were: John Wright, Jack Slevin, Ted Davies, Robert Funk, Jack Wiggins, Leo Foran and Gail Clapp. We are also proud of our boys for their excellent basketball record. Among Okaw Valley Champions we claim Ted Davies, Jack Slevin, and Robert Funk. Other fields of activity in which our members continued to take active part are music and oratory. We presented our annual Junior Class play, under the supervision of Miss Choyce, on Thursday, November 12, in the High School Auditorium. Every one seemed to enjoy this three act comedy, "Betty, The Girl O' My Heart." The Senior Class entertained us with a party on April 8. The climax of our Junior career was the 1937 Junior-Senior Banquet, which was held April 29, in the high school auditorium.

Next September we will take our places as Seniors and endeavor to keep our high standard.



## Sophomore Class

In September of 1935 about forty-five boys and girls entered upon their high school careers. Several of the more fortunate ones had an older brother or sister showing them around the school. The first few days several classes were missed, but after that it was not hard to be in the right place at the right time.

The first class meeting was held under the guardianship of Miss Swaim and Mr. Engle. The following officers were elected: Edward Farrell, president; Gene Spearman, vice-president; Betty Hill, secretary-treasurer; Allen Ball, member of the athletic board of control.

When the weiner roast season arrived, this group had a weiner roast. Due to rain, it was held in the cooking room. The weiners were boiled, but as there were plenty of them, everybody was satisfied.

Their candidate, Betty Hill, was chosen as Queen of the Homecoming. At the head of the parade she was carried in her throne on the shoulders of four husky freshmen.

Later in the year they held a party in the South Assembly. At the end of the year they attended the annual school picnic at Lake Decatur. To show their appreciation, they presented a gift to Mr. Engle, who was leaving to fill another position.

In the fall of 1936 practically this same group was back at B. T. H. S. watching the new Freshmen trying to find their places. After getting adjusted to school again, they held their first class meeting. With Miss Shaw and Mr. Davies as class advisors, they elected as officers the following: Maxine Probus, president; Frances Moery, vice-president; Enfer Evans, secretary-treasurer; Tommy Ray, member of the Athletic Board of Control.

At their weiner roast Mother Nature was again unkind, so they had their food and frolic in the high school. For the Homecoming their candidate, Catherine Kintner, was chosen as Queen. Tom Clark and Allen Ball were members of the Okaw Valley Champion basketball squad.

We are now looking forward to our Junior year.



FIRST ROW: Marietta Rambo, John Hendrix, Rosanna Fleming, Edwin Kanitz, Frances Moery, Tommy Ray, Maxine Probus, Enfer Evans, Lucille Weber, Paul Lamb, Betty Hill. SECOND ROW: Dale Redman, Betty Flory, Edward Farrell, Virginia Warner, Rachel Lamb, Doit Fish, Loretta Scott, Tom Clark, Lola Hamman, Helen Plummer. THIRD ROW: Charlotte Lefever, Kenneth Fristoe, Catherine Kintner, Allen Ball, Margaret Tynan, Ted Romack, Elzora Smith, Lloyd Minor, June McCrary. FOURTH ROW: Dorothy Brown, Gordon Hopper, Jack Wiggins, Herbert Morgan, Dean Medaris, Robert Lane, Lester Hotz, Dale Kirkland, Junior Fay, Lois Hill. Monica Hinton is not in the picture.







FIRST ROW: Glen Gorrell, Earl Sebring, Rolla Van Matre, Howard Moore, Robert Brittenham, George Loudenback, Jim Raglan, Scotty Wilkinson, Robert Moore, Dale Jackson, John Foran, Barney Slevin, Fred Lux, Warren Hendrix. SECOND ROW: Mary Belle Lefever, Julia McCullough, Dorothy Bruce, Lena Cornelius, Lois Spooner, Emily Vance, Norma Resler, Mary Redman, Marjorie Funk, Cecelia Monaghan, Betty Haine, Mary Brandenburg, Bernadine Conway, Luella Wiggins, Gloria Larson. THIRD ROW: Betty Doty, Helen Lamkin, Irene Flennikin, Mary Conlin, Hollis Stout, Leah Hotz, Margaret Winzenburger, Gertrude Norberg, Jean Brittenham, Helen Porter, Marjorie Bogue, Ruby Fay, Dorothy Neal, Mattie Nichols, Barbara Crook. FOURTH ROW: Charles Ray, Bud Warner, Ralph Rose, Elvin Neathery, James Scott, Everett Wildman, Stanley Sutphen, Robert Driskill, Carl Morgan, Robert Still, Warren Metcalf, Billy Proctor, Ralph Clark, Harley Day. Kenneth Fisher is not in the picture.

• • •

## Freshman Class

On the eleventh day of September, 1937, Bement Township High School welcomed fifty-eight freshmen. They industriously entered their places with much enthusiasm. On the fifteenth day of September they elected Jimmy Raglan to serve as president, George Loudenback as vice-president, Scotty Wilkinson as secretary-treasurer, and Kenneth Fisher as member of athletic board of control. They have not regretted their choice at any time during the term.

Under the supervision of the class advisors, Miss Swaim and Mr. Fields, they prepared a float to compete for a prize in the homecoming parade. The homecoming was celebrated on October the twenty-third with a parade, a pep meeting, and the crowning of the queen. The Freshmen chose Emily Vance as their candidate for queen. They also took part in the pep meeting by putting on a stunt.

We must not leave out the Freshman party. A large group was gathered together for a few hours of fun. They played games in the gym and then when tired restored their vigor by eating hot boiled weiners.

Barney Slevin, a member of the Freshman class, has proved to be one of the highest scoring boys on Bement's regular basketball team. He helped to win a trophy in the Okaw Valley Tournament. Some of the other freshmen who were on the squad are Billy Proctor, Charles Ray, Kenneth Fisher, Harley Day, Glen Gorrell, Ralph Clark, and Everett Wildman.

Along with the athletes we must include the freshmen boys who played on the football team. John Foran, Junior Moore, Kenneth Fisher, Dale Jackson, and Ralph Clark received letters this year.

Besides the regular class work, several freshmen have chosen other ways in which to spend their time. Some are enrolled in the Girls' and Boys' Glee Clubs. Several are members of the high school band and orchestra. The girls taking cooking or sewing are enrolled in the Home Economics Club. The boys who take soils and crops are enrolled in the F. F. A. Club.





## Activities

## Mixers and Rippers

FIRST ROW: Frances Lefever, Julia Ann Dobson, Marjorie Stuber, Sibyl Romack, Josephine Lefever, June McCrary, Betty Hill, Mary Belle Lefever, Frances Moery, Marietta Rambo, Maxine Probus. SECOND ROW: Luella Wiggins, Betty Flory, Rosanna Fleming, Mary Redman, Catherine Kintner, Rachel Lamb, Margaret Tynan, Lois Jean Spooner, Lena Mae Cornelius, Charlotte Lefever, Betty Doty. THIRD ROW: Betty Jean Hainey, Marjorie Funk, Mary Conlin, Leah Hotz, Marjorie Bogue, Miss Ponder, Helen Lamkin, Mattie Nichols, Ruby Fay, Dorothy Bruce, Julia McCullough. Marjorie Moery is not in the picture.



## Future Farmers of America

FIRST ROW: Charles Ray, Robert Hendrix, Dick Glennon, John Hendrix, Robert Medaris, Robert Funk, Howard Lindstrom, John Neal, Eugene Lamb, Wilford Wildman, George Loudenback, Billy Proctor, Harley Day, Glen Gorrell, Warren Hendrix. SECOND ROW: Donet Tracy, Dale Jackson, James Scott, Dale Redman, Elvin Neathery, Carl Morgan, John Foran, Kenneth Fristoe, John Wright, Gail Clapp, Dale Kirkland, Everett Wildman, Junior Fay, Paul Lamb. THIRD ROW: Mr. Hodam, Ralph Pfeiffer, Stanley Sutphen, Howard Moore, Rolla Van Matre, Marion Gardner, Charles Body, John Marker, Dean Medaris, Paul Fish, Vurdette Wildman, Charles Taylor, Junior Moery. FOURTH ROW: Donald Resler, Robert Glennon, Robert Brittenham, Harold Kirk, Billie Liestman, John Malkus, Robert Larson, Everett Abel, Jack Slevin, Junior Rittenhouse, Wayne Brunson, Joe Rittenhouse, Leo Foran.



## Mixers and Rippers

PRESIDENT  
VICE-PRESIDENT  
SECRETARY  
TREASURER  
SPONSOR

Josephine Lefever  
June McCrary  
Betty Hill  
Mary Belle Lefever  
Miss Ruth Ponder

The home economics club has spent many happy evenings together discussing such things as customs of Mexico, making summer vacations profitable, and wrapping gifts attractively.

Girls who are taking some course in home economics are eligible to be members of the club. Because the classes in this department are large this year, the club membership has been greatly increased. This organization met at four o'clock on the second Wednesday of each month.

In the early part of the term, the girls initiated the new members into the club. This event is eagerly anticipated—especially by the older club members. On the twenty-second of December the members of the club sponsored a Christmas Program for their mothers. The play, "The Christmas Ghost," was followed by readings and songs. At this program each girl presented her mother with a gift which she made in her classwork.

The style show sponsored by the home economics club was the last event of the year. In this, garments which had been made by members of the sewing classes were modeled.



## Future Farmers of America

PRESIDENT  
VICE-PRESIDENT  
SECRETARY  
TREASURER  
SPONSOR

Howard Lindstrom  
Robert Funk  
Eugene Lamb  
Robert Medaris  
Mr. Lowell Hodam

The Future Farmers of America is an organization made up of boys studying vocational agricultural. The local chapter is affiliated with state and national organizations. The emblem of the club is shown on the F. F. A. pin.

The boys of the club try to meet at least once a month to discuss the problems and activities of the farm. This organization is very active in judging contests of all kinds.

One of the big events of the year is the initiation of the new members of the club. This is usually held sometime in November. The other big event is the father and son banquet which is sponsored by the F. F. A. boys. This banquet was held on March 30 at 6:30 o'clock in the high school gymnasium. The following program was enjoyed:

INVOCATION	Reverend Adams
VOCATIONAL AGRICULTURE AS A YOUNG MAN SEES IT	Marion Fish
VOCATIONAL AGRICULTURE AS DADS SEE IT	Thomas Redman
ADDRESS	Reverend Hopper
REPORT OF F. F. A. ACTIVITIES	Robert Medaris
REPORT OF LOAN FUND	T. W. Lamb
BENEDICTION	Reverend Anderson

## Girls' Glee Club

FIRST ROW: Agnes Ryan, Evelyn Prah, Rachel Lamb, Frances Moery, Betty Hill, Catherine Kintner, Charlotte Lefever, June McCrary, Josephine Lefever. SECOND ROW: Rosanna Fleming, Mary Frances Vance, Lois Spooner, Helen Porter, Mary Margaret Fleming, Jane Camp, Marjorie Stuber, Roberta Carter, Emily Vance, Mr. Trickey. THIRD ROW: Betty Jean Hainey, Mary Conlin, Marjorie Funk, Lola Hamman, Loretta Scott, Norma Resler, Hollis Stout, Maxine Probus, June Turner, Marietta Rambo. FOURTH ROW: Elizabeth Winzenburger, Mary K. Hendrix, Irene Flennikin, Phyllis Metcalf, Margaret Winzenburger, Marjorie Bogue, Nellie Pollard, Forestine Probus, Geraldine Shaw, Bernadine Conway.



## Boys' Glee Club

FIRST ROW: Robert Hendrix, John Hendrix, Scotty Wilkinson, Billy Hill, Catherine Kintner, Don Resler, John Neal, Faul Lamb, Don Kitson. SECOND ROW: Ralph Clark, Doit Fish, George Loudenback, Wayne Brunson, Forney Fuqua, Lloyd Minor, Fred Lux, Mr. Trickey. THIRD ROW: Jim Raglan, Robert Fisher, Ted Davies, Vurdette Wildman, Rolla Van Matre, Stanley Sutphen, Billy Proctor.



# Glee Clubs

## Officers of the Girls' Glee Club

PRESIDENT Frances Moery  
 VICE-PRESIDENT Betty Hill  
 SECRETARY-TREASURER Catherine Kintner  
 LIBRARIAN Rachel Lamb  
 REPORTER Evelyn Prah

## Officers of the Boys' Glee Club

PRESIDENT Billy Hill  
 VICE-PRESIDENT Don Resler  
 SECRETARY-TREASURER John Hendrix  
 LIBRARIAN Scotty Wilkinson  
 REPORTER John Neal  
 DIRECTOR Alden H. Trickey



Both clubs have been very active all during the school year. The girls met on Monday and Thursday morning at 8:15. The boys met on Wednesday and Friday mornings.

In December we made our first public appearance in our Operetta, "Tune In." This had quite a clever plot and with both groups putting their best singing and acting into it "Tune In" was a grand success. In the first act the girls wore pretty formals and the boys tuxedos. The second and third acts took place at a New Year's Eve Party, so both boys and girls wore masquerade costumes.

The cast was as follows: Kasper Kroggins, George Loudenback; Mrs. Kroggins, Mary M. Fleming; Jean Kroggins, Jane Camp; Joe Brown, John Neal; Jerry Kennedy, Don Resler; Mitzi, "Dolly" Vance; Tilly, "Kate" Kintner; Milly, Rosann Fleming; Billy, Frances Moery; Dave, Ted Davies; Bob, Bob Fisher; Archibald Throckmorton, Wayne Brunson; Lysander Phipps, Paul Lamb.

Kasper Kroggins, czar of the cod-fish industry, and Jerry Kennedy, his Advertising Manager, have decided to tell the world about Kroggins Kippered Kodfish via radio. Joe Brown, operator of WTNT, is putting on a test broadcast for them. If this test is successful, the resulting contract will enable him to keep up the payments on the station. The mystery soprano, who is to be starred on the program, turns out to be Mrs. Kroggins who has considerably more ambition than talent. Jerry promises to keep her off the air. He devises a scheme which keeps Mrs. Kroggins from singing, letting "Mitzi," a telephone operator, sing in her place making the program a success, but at the same time placing Joe and Jerry on the wrong side of the Kroggins. With several comic scenes and songs the operetta finally comes to a happy ending for everyone involved.

This year Margaret Winzenburger, Mary M. Fleming, and Dolly Vance represented our school in the All State Chorus which was held at Champaign November 4-6.

The next activity carried on by the combined clubs was the Annual Spring Festival held in Cerro Gordo. Each school in Piatt County was represented by about fifty students. We sang "Calvary" and "Nightfall," sung to the tune of Liszt's Liebestraum. Everyone seemed to enjoy the Russian melody, "Dark Eyed Russian Girl." The novelty number was the negro song, "Lawdy, What A Lonesome Day." The other numbers were "In the Gloaming," "With You, Dear," and "A Garden Lullaby" sung to the well known tune, "Barcarolle." The festival has been an annual affair since 1933. It was attended by a large crowd, and judging by the applause given us, we believe the people enjoy the old familiar songs.

The last time we made our public appearance was at our Spring Concert, May 7. We used the same songs as were sung at the festival.

We all feel that the Glee Clubs have made real progress this year.







## B. T. H. S. Band

Identification by Instrumentation for Band and Orchestra

CLARINETS: Dolly Vance, Don Resler, Mary K. Hendrix, Barbara Camp, Emily Vance, Billy Hill, Marietta Rambo, Margaret Winzenburger, Gordon Hopper, Rowena Crook, Ruth Lamb, Jimmy Fairbanks, Betty Landis.  
 TRUMPETS: Edwin Kanitz, Jane Camp, Frances Moery, Betty Hill, Robert Driskill, John R. Hendrix, Norma Resler.  
 E. FLAT HORNS: Mary M. Fleming, Rosanna Fleming, Peggy Moery, Mildred Marker, Bob Scott, Burton Tatman.  
 TROMBONES: Junior Moery, George Loudenback, Marjorie Funk, Mary Belle Lefever, Kenneth Fisher.  
 BASSES: Dean Medaris, Bob Loudenback, Ralph Clark.  
 DRUMS: Scotty Wilkinson, Bob Medaris, Billy Proctor, Herbert Schuh, Doit Fish.  
 BARITONES: William Fleming, Leland Crook, George Vance.  
 SAXOPHONES: Lois Jean Spooner, Betty Flory.  
 FLUTES: Warren McPherson, Francis Lincicum, Helen Bruce.  
 VIOLINS: Robert Driskill, Scotty Wilkinson, Josephine Lefever, Marjorie Funk, Barbara Crook.  
 BASSOON: Marjorie Bogue.  
 TYMPANI: Charlotte Lefever.  
 MARIMBA: Catherine Kintner.  
 BASS CLARINET: Enfer Evans.  
 ALTO CLARINET: Elton Haynes.  
 OBOE: Bernadine Conway.  
 E. FLAT CLARINET: Marjorie Lamb.  
 PIANO: Bernadine Conway.  
 DIRECTOR: Alden H. Trickey.

## Ensembles





# Band

## Officers

PRESIDENT  
VICE-PRESIDENT  
SECRETARY-TREASURER  
LIBRARIAN

Mary Frances Vance  
Don Resler  
Emily Vance  
Edwin Kanitz

Betohi is very proud of her band. In the fall all the members donned their uniforms and cheered the team at football games by marching between halves of games and playing peppy marches at the quarters. A pep band composed of twenty-four members played at all the home basketball games.

At our annual "Turkey Day" football game, both the Bement and Monticello bands played together at the half. Their hands were so cold and stiff it was a miracle that any notes came out, but being musicians, they "stuck it out" and helped pep the crowd.

This year there are fifty-five in our band. This number is made up by both grade and high school students. The school purchased a new French Horn, Baritone, and Bells this year, which all help to improve the tone of the band as well as the appearance.

In January we played over radio station WILL with the Urbana High School Band. Since it was the week of the National Band Clinic, Joe E. Maddy from Michigan and Ray Dvorak, former director of the U. of I. band, directed the combined bands in the marches, "My Hero," and "His Honor."

Two years ago our suits were bought by our Band Parents Association and have been worn many times to everyone's delight since they are bright purple and white, capes, trousers, and caps. Again this year the members wore them to the district contest held in Clinton, where we placed in second division.

The Annual Spring Concert was held May 14.

The band lost only five of its members by graduation this year. Those band members who will be back in school next year are planning to practice during the summer, thus assuring Betohi of another good band next year.

# Ensembles

## Officers

PRESIDENT  
VICE-PRESIDENT  
SECRETARY-TREASURER  
LIBRARIAN  
REPORTER

Junior Moery  
Don Resler  
Mary Margaret Fleming  
Edwin Kanitz  
Mary Frances Vance

The orchestra consisted of eighteen members. We met twice a week, Tuesday and Thursday. This year we met as an orchestra some days and as ensembles other days. The ensemble work was new and very interesting. Each of the groups met in different rooms and worked up their pieces. A member of each group took charge and helped the rest. A selected number, as an orchestra, got to play for different activities such as the Junior Play, Operetta and Commencement, Exercises.

The violin ensemble was composed of: Robert Driskill, Josephine Lefever, Scotty Wilkinson, Marjorie Funk, and Barbara Crook.

The first of the year we had what we called a Clarinet sextette. Although we had over six members in it, we had just six parts. Bass Clarinet, Enfer Evans; Alto Clarinet, Elton Haynes; B Flat Clarinets, Mary Frances Vance, Don Resler, Mary Kathryn Hendrix, Elizabeth Winzenburger, Emily Vance, and Margaret Winzenburger. A Clarinet quartette went to the District Contest. They were Mary Frances Vance, Don Resler, Emily Vance, and Margaret Winzenburger. They played a Southern medley "Alabama Sketches." The quartette placed in first division which enabled them to go to the state contest.

The cornet quartette was made up of Edwin Kanitz, Jane Camp, Frances Moery, and Betty Hill.

We had also a brass quartette including Junior Moery, Trombone; Mary Margaret Fleming, French Horn; George Loudback, Baritone; and Edwin Kanitz, Trumpet.

Our orchestra was smaller this year than in previous years, but the ensemble work was very interesting and could be carried out by only a few at a time.



## Contest Winners



SEATED: Emily Vance, Mary Margaret Fleming, Jane Camp. STANDING: Catherine Kintner, Junior Moery, Donald Resler, Margaret Winzenburger, Jim Raglan, Mary Frances Vance.

## State Solo Contest

Betohi was proud to have so many students entitled to enter the state solo contest held in Champaign April 22 and 23.

Junior Moery entered on trombone, playing the "Grenadier" by Hardy, and placed in second division.

Catherine Kintner placed in second division on the marimba. There were just fourteen marimbas, but all of them were exceptionally good. Catherine played the Raymond Overture.

Jane Camp is the only one that placed in the first division. Her solo was MacDowell's "Concert Etude." There were sixty pianos entered.

The clarinet ensemble, Dolly Vance, Don Resler, Emily Vance and Margaret Winzenburger, which placed first in the district contest, was unable to enter the state, but they had worked selections, "Alabama Sketches," by Cohen to a fine finish.

Elizabeth Winzenburger was entitled to enter this contest. Her piece was "Impromptu," by Schubert.

Out of every ten that entered the district on a certain instrument, one was entitled to go to the national. Although we had no national entries this year, we realize that most of these above musicians are lower classmen, so we're looking forward to future honors.

## Oratorical Contest

In the local contest held on March 19, in the Bement High School Auditorium, there were only five entrants. Those who participated in dramatic readings were Mary Margaret Fleming, first place winner, Marjorie Stuber, and Grace McPherson, who placed second and third, respectively. Jimmy Raglan placed first in humorous readings with Mary Frances Vance placing second.

Mary Margaret Fleming and Jimmy Raglan represented Bement in the Piatt County Oratorical Contest, which was held on March 24 in the Bement High School Auditorium. Jimmy placed first in the humorous readings, and Mary Margaret received fourth place in dramatic readings.



# Dramatics

## "Betty, the Girl O' My Heart"

The three act comedy, "Betty, the Girl O' My Heart," by Katherine Kavanaugh, was presented by the Junior Class on November 12, 1936, in the Bement Township High School Auditorium.

The cast was as follows:

Marie, the maid	Phyllis Plummer
Mrs. Jenkins, the housekeeper	Wilma Jackson
Martin, the butler	Elton Haynes
Mrs. Graves	Jane Camp
Elizabeth, her daughter	Grace McPherson
Betty	Ruth Lamkin
Jerry Carmichael	Robert Fisher
Peter Graves	Billy Hill

Director  
Miss Frances Choyce

## "The Other Ghost"

The Girls' Athletic Association gave a three act mystery play, "The Other Ghost" by Helen Monsell, in Bement High School Auditorium on February 11, 1937.

The cast was as follows:

Hester Thorpe M. D., who rents Care-Free Cabin	Mary M. Fleming
Eudora Benning, her friend	Mary Frances Vance
Sylvia Kirkland, their friend	Rosanna Fleming
Tabitha Moore, Sylvia's nurse	Margaret Winzenburger
Lizzie Gordon, mountain girl	Wilma Jackson
Joyce Pennimar, who likes to be lazy	Jane Camp
Nancy Jerome, who wants to see a ghost	Catherine Kintner
Annette Sale, who has been abroad	Mary Conlin
Grace Gibson, who likes her fun	Luella Wiggins
Lucy Morrison, who helps unravel mystery	Emily Vance

Director  
Miss Eloise Shaw

## "The Bat in the Belfry"

In the high school auditorium on May twentieth, the senior class presented the three act mystery-comedy, "The Bat In The Belfry," by Lawrence Worcester.

The cast was as follows:

William B. Wescott D. D., pastor	Donovan Wildman
Wayne Westcott, his son	Junior Rittenhouse
Dr. Gilbert Henry, an old friend of the Westcott's	Donald Resler
Amy, maid at the parsonage	Marjorie Stuber
Jean Faelton	Mary Frances Vance
Marjorie Faelton	Sisters and next door
Arlene Faelton	neighbors of
Helen Faelton	Westcott's.
Lorina Loring, writer of mystery thrillers	Phyllis Petersen
Bill Brown, detective of U. S. Secret Service	Joe Rittenhouse
The Duke of Picadilly, Visitor to Sleepy Valley	Harold Kirk
Madame Nona, a crystal reader	Nellie Pollard
Ulysses Farragut Chattle Wattle, detective	Junior Moery
The Red Robe	??????
Mr. X	??????

Director  
Miss Isabelle Houston





FIRST ROW: Luella Wiggins, Grace McPherson, Lois Hill, Catherine Kintner, Rosanna Fleming, Betty Hill, Mary Frances Vance, Wilma Jackson, Norma Resler, Pauline Conlin, Laurine Conlin. SECOND ROW: Bernadine Conway, Marybelle Neal, Marjorie Bentley, Emily Vance, Jane Camp, Marietta Rambo, Edith Proctor, Mary Cornelius, Betty Lou Flory, Elizabeth Winzenburger, Helen Plummer. THIRD ROW: Marjorie Bogue, Mary Conlin, Margaret Winzenburger, Mattie Nichols, Helen Porter, Mary Margaret Fleming, Miss Shaw, Rachel Lamb, Blanche Day, Elzora Smith, Lena Cornelius.



## Girls' Athletic Association

PRESIDENT	Mary Frances Vance
VICE-PRESIDENT	Betty Hill
SECRETARY-TREASURER	Wilma Jackson
SPONSOR	Miss Eloise Shaw

The Girls' Athletic Association of the Bement Township High School is now three years old. They were organized in 1934 under the supervision of Miss Dorothy Steigman. During this past year, Miss Eloise Shaw, through her energy and cooperation, has helped the club to continue its active program.

Any girl who is willing to cooperate with the rules of the club is eligible to be a member. The group has a very active program which consists of volleyball, basketball, and baseball.

During the early spring months the girls play baseball out of doors thus affording an opportunity for health and pleasure.

Most of the winter months are spent playing basketball. The girls are divided into different teams and at the end of the season they have a basketball tournament.

The early fall months are spent playing volleyball. Although the girls do not play this game very long, they enjoy it immensely.

The G. A. A. held a play day on October 17, at which they entertained their Lovington and Monticello G. A. A. friends. During the day, they played basketball, soccer, and baseball. The girls were divided into groups with the senior members acting as head officials for the games. A prize, which was a small souvenir basketball or football with a ribbon on it, was given to each girl on the winning team.

The members sell candy and taffy apples at basketball games and in the corridor during the noon hour. This money is used to help send the most active members camping on Lake Bloomington. They are chosen according to their willingness to help the association, their sportsmanship, and their adherence to health rules which they are asked to carry out.

In order to help fill the treasury box, the G. A. A. gave a three act mystery play, "The Other Ghost," on February 11. This money also will be used to help send their members camping. The club hopes they will be able to send more girls than they ever have before.





FIRST ROW: Walter Bentley, Wayne Brunson, Jack Slevin, Charles Body, John Wright, John Neal, John Marker, Leo Foran, Charles Taylor, Harold Kirk, Robert Foran, Junior Moery. SECOND ROW: Mr. Fields, Assistant Coach; Manager Elmer Dye, Dale Kirkland, Richard Jarboe, Gail Clapp, Ted Davies, John Malkus, Robert Funk, Robert Fisher, Kenneth Fisher, Paul Fish, Allen Ball, Mr. Snavelly, Coach. THIRD ROW: Tom Clark, Howard Moore, Donet Tracy, Kenneth Fristoe, Tommy Ray, Robert Lane, Doit Fish, Forney Fuqua, Enfer Evans, Ralph Clark, Dale Jackson.



## Football

Our new coach, Mr. Edwin Snavelly, assisted by Mr. H. H. Fields, developed a fine football team from a small, light squad of players. Playing a nine game schedule, his team won five, lost four, and finished fourth in the Okaw Valley Conference.

The first game was played on September 25 at Taylorville. Although the Purple and White lost this first game 13 to 0, they displayed a tight, rugged defense throughout.

The following week, October 2, Bement played the first home game of the season. They won over the much heavier Georgetown eleven, 6 to 0.

Coach Snavelly's boys travelled to Atwood for the next encounter on October 9, and were victorious, 12 to 0.

In the second home game played on October 16 the Purple and White Gridders were pitted against Shelbyville. After a very hard fight, Snavelly's team was on top of a 15 to 13 score, winning by the narrow margin of a safety.

The annual homecoming game was played the following week with Newman. Bement was defeated in this game 20 to 6.

Armistice Day found Coach Snavelly and his team invading Sullivan. This game Bement took from the "Reds," by the close score of 7 to 6.

The annual Thanksgiving game was played on the home field. Monticello displayed a brilliant passing attack and emerged on the long end of a 26 to 0 count.

On December 1, two hundred football fans gathered in the basement of the Methodist Church to pay honor to Coach Snavelly and his Bement High School football team. The principal speakers were Wally Roettger, Illinois baseball coach, and Captain El Sayre and Cliff Kuhn of the University of Illinois football team. Fifteen players were awarded large B's and eighteen received reserve letters. The large B's went to Captain John Marker, John Malkus, John Neal, Junior Moery, Charles Taylor, Charles Body, Harold Kirk, Wayne Brunson, Jack Slevin, Jack Wiggins, Leo Foran, Gail Clapp and Manager Allen Ball.

Reserve letter awards went to Walter Bentley, Robert Foran, Don Tracy, Paul Fish, Doit Fish, Kenneth Fristoe, Robert Fisher, Tom Ray, Richard Jarboe, Forney Fuqua, Dale Kirkland, Howard Moore, Tom Clark, Robert Lane, Enfer Evans, Ralph Clark, and Dale Jackson.





FIRST ROW: Tom Clark, Junior Moery, Jack Slevin, Robert Funk, John Neal, John Malkus, Ted Davies, Charles Taylor, Allen Ball, Barney Slevin. SECOND ROW: Mr. Snavelly, Glen Gorrell, Paul Lamb, Everett Wildman, Rolla Van Matre, Manager John Marker, Robert Still, Lloyd Minor, Billy Proctor, Charles Ray, Mr. Fields. THIRD ROW: Gordon Hopper, Kenneth Fisher, Dean Medaris, Tommy Ray, Forney Fuqua, Herbert Morgan, John Foran, Marion Gardner, Harley Day.

• ▲ •

## Basketball

The 1936-37 basketball season was a most successful one for Bement. Our new coach, Mr. Snavelly, developed a team that won the Okaw Valley Tournament, placed second in the conference race, and was runner-up in the regional tournament. This team, lacking height and an adequate supply of reserves, beat every team in the Okaw Valley.

Bement's Purple cagers opened the season with a pair of victories. DeLand was defeated 31-13 and Georgetown fell, 25-22. Then with a little hard luck and strong opponents Bement bowed before Hammond, Longview, Clinton, Tolono, and Shelbyville.

Coach Snavelly's hardwood performers then got down to business and won the next six conference starts before being stopped. Arcola was the first victim, going down 30-26. Atwood was stopped 29-15, and Newnan met defeat 41-16. Back on the home court, Bement outlasted Tuscola, 33-23. Cerro Gordo, the foe in the next encounter, was put down 19-14. In a rough and tumble game on the home floor, Bement toppled Monticello 30-18. Shelbyville defeated the local quintet for the second time, 26-16. Snavelly's five next met Cerro Gordo and added another victory, 34-14.

The last conference game was played at Monticello. A win over the Sages would have assured Bement of a tie with Villa Grove for the conference championship. However, Hannah's basket in the last five seconds of play nipped Bement 27-25.

## Tournament Play

During Christmas vacation, the B. T. H. S. basketball team played in the Paxton consolation tournament. After being defeated by Paxton in their first start, the Purple and White won from Loda. Tolono, then took a close 37 to 35 decision.

The Okaw Valley Tournament was played at Arcola, February 3-6. The Snavelly five was given a slim chance against such teams as Villa Grove, Shelbyville, and Monticello. Bement's first opponent was Shebyville who fell 28-23. Next came Cerro Gordo, who drew a bye, and they went down before the Purple's pace, 20-14. In the semi-finals, played in the afternoon, Arthur lost to the Snavelly Quintet, 21-16. Although tired but happy, Bement, with the aid of Junior Moery's five baskets, defeated Oakland 31-23 to annex the title.

The B. T. H. S. basketball team entered the Tuscola Regional tournament where they emerged with second honors. Lovington was trimmed in the initial game, 39-17 and Villa Grove, conference winners, was next in line for the Purple and White. They were defeated 15 to 12. In the finals Brocton defeated Bement, 26 to 22.

As runner-up in the Tuscola regional, the Purple Quintet was assigned to the strong Springfield sectional tournament. Athens, who later won the tournament, was Bement's first opponent. The Purple Cagers tied the score at 17 all in the third quarter, but Athens outscored the Bementers in the final period 12-2 to win the game 29-19.



# Tournament



JOHN MALKUS—"Jake," a six foot Senior, acted as captain for the 1936-37 team. He was an excellent rebounder and his height enabled him to control the ball on offense.

JACK SLEVIN—Jack, another Junior, is a very accurate shot, both at long range and close one handers.

CHARLES TAYLOR—"Chalk," probably the calmest player on the team, was outstanding for his ability to guard closely without fouling.

TOM CLARK, ALLEN BALL, JOHN NEAL, and BOB FUNK—These subs, with the exception of John Neal, will be back next year. It is said that it takes more grit to be a sub than it does to be a star.

TED DAVIES—Ted, a Junior, is a player we enjoy watching perform for he keeps a cool head even in the most exciting moments of the game.

BARNEY SLEVIN—To see him play you wouldn't believe he is only a Freshman. Although rather small, Barney's speed and accurate shooting were great assets to the team.

JUNIOR MOERY—Because of his brilliant shooting in the Okaw Valley Tournament, this Senior was able to capture a berth on the first team.





FIRST ROW: Blanche Day, Wilma Jackson, Rosanna Fleming, Mary Margaret Fleming, Miss Houston, Phyllis Petersen, Kathryn Cord, Edith Proctor. SECOND ROW: Forestine Probus, Marjorie Stuber, Maxine Probus, Jane Camp, Margaret Hendrix, Pauline Conlin, Laurine Conlin. THIRD ROW: Mary Frances Vance, Wilford Wildman, Doit Fish, Robert Fisher, John Neal, John Wright, Elton Haynes, Charlotte Lefever.

• • •

## The Betohi Staff

EDITOR	Mary Margaret Fleming
ASSISTANT EDITOR	Robert Fisher
BUSINESS MANAGER	John Neal
ASSISTANT BUSINESS MANAGER	John Wright
NEWS	Rosanna Fleming, Jane Camp
PERSONALS	Marjorie Stuber, Charlotte Lefever, Laurine Conlin
DEPARTMENTALS	Blanche Day, Edith Proctor, Forestine Probus
SPORTS	Elton Haynes, Doit Fish, Wilford Wildman
GIRLS' ATHLETICS	Wilma Jackson
FEATURES	Mary Frances Vance, Maxine Probus, Pauline Conlin
TYPISTS	Kathryn Cord, Phyllis Petersen, Margaret Hendrix
ADVISOR	Miss Isabelle Houston

This group of journalists meets every Tuesday morning to write up the items concerning school activities of the week.

The "Betohi News" was started in the fall of 1928 under the supervision of Miss Isabelle Houston. The purpose of this paper is to let the public know what is happening about the school. This news is published in the local paper through the courtesy of the Bement Register.

Since there were several interested in journalistic work this year, the staff was enlarged. There were three members put on the departmentals, personals, features, and sports where there have usually been two. During the first semester, two editors in each department gathered and wrote up the items. At the beginning of the last semester one person in each of these four departments gave his job over to someone who had not served. Charlotte Lefever took over Marjorie Stuber's place in writing personals. Blanche Day was given Edith Proctor's place in the departmentals. Maxine Probus took Mary Frances Vance's place in writing features. Margaret Hendrix was given Kathryn Cord's job as typist. At the close of the football season Doit Fish was substituted for Wilford Wildman as sports writer.



**F  
E  
A  
T  
U  
R  
E  
S**



## Senior Will

- I, Charles Taylor, do will and bequeath my athletic ability to Donet Tracy.
- I, Ruth Fay, do will and bequeath my talking ability to Fern Lindstrom.
- I, Harold Kirk, leave my "booming voice" to Elton Haynes.
- I, John Malkus, will and bequeath the care of Catherine Kintner to Robert Hendrix.
- I, Marguerite Monaghan, do leave my snapping blue eyes to Catherine Phalen.
- I, Josephine Lefever, do leave my jolly disposition to Leo Foran.
- I, Nellie Pollard, leave my patent on giggling to Richard Jarboe.
- I, Edith Proctor, do leave my willingness to work to Water Bentley.
- I, Forrestine Probus, do will and bequeath my good intentions to reduce to Blanche Day.
- I, Julia Ann Dobson, do bequeath my shortness to Jane Camp.
- I, Geraldine Shaw, do leave my wavy red hair to Gail Clapp.
- I, Don Resler, do will and bequeath my musical ability to Wilford Wildman.
- I, Howard Lindstrom, do leave my ability to lead the F. F. A. to Billy Hill.
- I, Mary Frances Vance, do will and bequeath my reputation of always being late to Wilma Jackson.
- I, Dorothy Arnold, do will and bequeath my propensity to dream of the future to Evelyn Larson.
- I, Wayne Brunson, do leave my ability of growing a moustache to Paul Fish.
- I, Marjorie Moery, bequeath my quiet winsome ways to Doris Winters and Grace McPherson.
- I, Robert Glennon, leave my ability to remain uncaught by the fairer sex to Bob Funk.
- We, Bob Medaris and Frances Lefever, leave our consistent romance to John Wright and Evelyn Prah.
- I, Len Conway, will my ability to fiddle to Maxine Kiser.
- I, Betty Anderson, leave my pretty wavy hair to June Turner.
- I, Roberta Carter, bequeath my large collection of stamps to Marion Gardner.
- I, Sybil Romack, leave the words, "I have no use for men," to Marjorie Bentley.
- I, Mary Margaret Fleming, do will and bequeath my Grand Opera talent to Mary Kathryn Hendrix.
- I, Margaret Hendrix, do will and bequeath my good stenography grades to Mary-belle Neal.
- I, Joe Rittenhouse, leave my ability to move my Adam's apple to Dick Glennon.
- I, Charles Body, do will my "fast" driving ability to Mary Cornelius and Phyllis Plummer.
- I, Ralph Pfeiffer, leave my fondness for brunettes to Ted Davies.
- I, Donovan Wildman, will my mischievousness in the assembly to Ruth Lamkin.
- I, Phyllis Marie Petersen, do leave my entertaining ability to Robert Larson.
- I, Rowena Crook, leave my silence to Robert Fisher.
- I, Gene Lamb, do, although I hate to part with it, leave my intense weakness for blondes to Everett Abel.
- I, John Marker, leave my popularity among the ladies to Forney Fuqua.
- I, Junior Moery, do will my school girl's complexion to Jack Slevin.
- I, Don Kitson, do leave some of my salted peanuts to Agnes Ryan.
- I, John Neal, do leave some of my long strides to Eulalia White so she may travel faster in the future.
- I, Junior Rittenhouse, do bequeath my love for farm life to the Conlin Twins.
- I, Marjorie Stuber, leave my snappy conversation to the male members of the future advanced stenography classes to Miriam Lux.
- I, Francis Doty, will my ability to mix drinks at a soda fountain to Phyllis Metcalf.



## Merit Awards

At Class Day Exercises each year medals are awarded for outstanding accomplishments in certain fields. This year there are two medals each for Scholarship, Activities, and Athletics.

The two Seniors whose grades for their entire four years of work in High School average the highest are given Scholarship honors.

The lettermen of the student body decide by vote the outstanding athletes in the Senior class.

A point system which allows so many points for each activity determines the recipients of the Activity medals.

Ordinarily, the names of the winners are withheld until the time of presentation, but this year an exception was made to allow the 1937 BETHI to announce them. They are as follows:

### SCHOLARSHIP

Mary Margaret Fleming  
Margaret Hendrix

### ATHLETICS

Charles Taylor  
John Malkus

### ACTIVITIES

Mary Margaret Fleming  
Mary Frances Vance

• • •

## Senior Who's Who

Each member of the student body was given the privilege of helping to select the Senior for Who's Who. Their verdict was as follows:

### MOST POPULAR

John Marker                      Mary Frances Vance

### BEST LOOKING

Junior Moery                      Betty Anderson

### MOST SENSIBLE

Junior Rittenhouse              Mary Margaret Fleming

### MOST FLIGHTY

Harold Kirk                      Ruth Fay

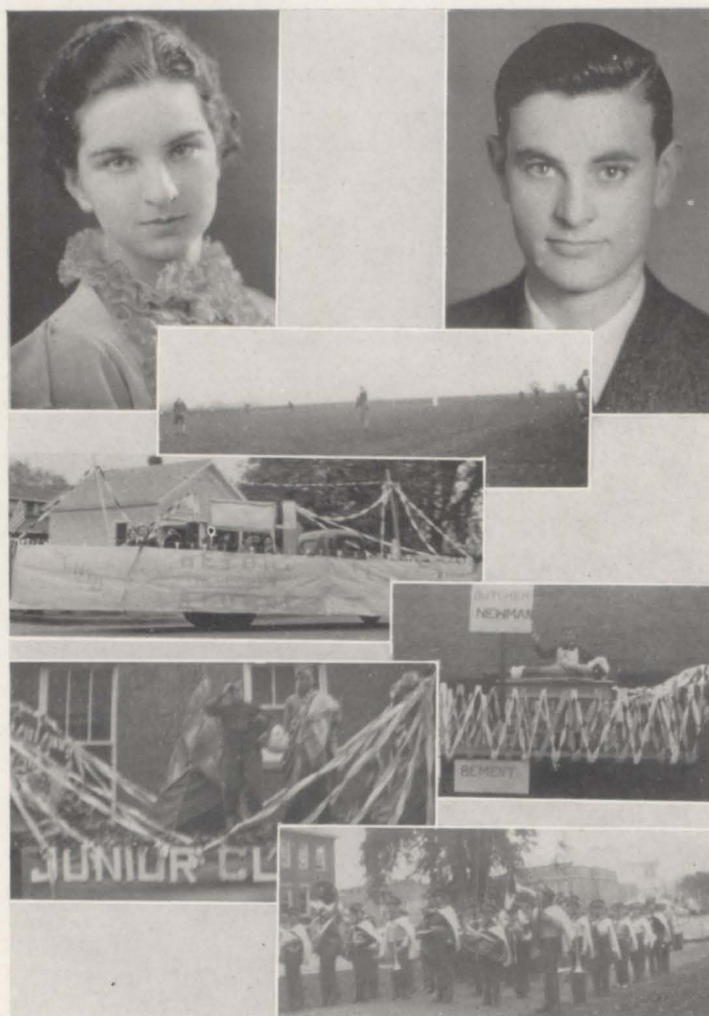
### WITTIEST

Joe Rittenhouse                      Marjorie Stuber

# Homecoming

Catherine Kintner  
Homecoming  
Queen

Junior Rittenhouse  
General  
Chairman



To start the Homecoming celebration a combined weiner roast and pep meeting was held Thursday evening, October 22, at the football field. A large crowd attended and displayed plenty of pep.

A queen for the Homecoming was selected from a representative of each of the four classes. The Freshmen nominated Emily Vance, the Sophomores chose Catherine Kintner, the Juniors selected Phyllis Metcalf, and the Seniors nominated Betty Anderson. Catherine Kintner won the honor and was crowned by Mr. Slusser between halves of the football game.

Before the game, a large parade containing many beautiful floats formed in front of the high school. After parading the business district, the procession marched to the football field where the floats were judged. The lower grades' float won first, the Seniors' got second and the Juniors' took third.

Newman defeated the Purple and White in the Homecoming game, 26 to 6. Even though they were not victorious, Bement played good football and showed they had the fighting spirit.

After the game, a basket supper was held in the lower corridor and Home Ec. Lab. of the high school. It was well attended by students and patrons. Following the supper, each of the four classes presented a stunt. The freshmen class presented a family album of teachers and students of B. T. H. S. The Sophomores gave a pantomime called "The Mellerdrama." The Juniors gave an amateur hour in which there were musical numbers and imitations of farm animals. The Senior class presented a fashion parade in which mannequins (Senior boys) modelled the latest fashions for ladies.



# Snaps





## Calendar

Sept. 7—The curtain rises on another act of "Education in B. T. H. S." The enrollment of 195 is the largest in the history of our school.

Sept. 10—A football squad of thirty will contest for positions on the varsity team to defend the B. T. H. S. colors this year.

Sept. 17—First class meetings held—officers for the year chosen.

Oct. 17—G. A. A. Play day—Monticello and Lovington girls entertained by Bement girls.

Oct. 23—Homecoming—"Kate" Kintner chosen queen.

Oct. 31—Oh! Halloween!

Nov. 6—State High School Teacher's meeting in Champaign. Teachers study — students play.

Nov. 19—Miss Ponder, the great football enthusiast, fell asleep in the assembly while listening to the broadcast of the Bement-Tuscola game.

Nov. 25—Bonfire pep meeting for Turkey Day game.

Nov. 26—Thanksgiving vacation—Are we HAPPY!

Dec. 4—Colonel Reu gave a short talk before the assembly about the World War.

Dec. 7—Glee Clubs presented "Tune In."

Dec. 8—Moving pictures of true scenes of the World War were shown in the gym.

Dec. 23—Christmas program in the auditorium—Out for Christmas vacation.

Jan. 5—Have you noticed John Kirkland's new shoes — Genuine COWHIDE and the squeak echoes all over the building.

Jan. 13—Disappointment! Dignified Mary M. Fleming received a black eye—not from fighting, however—just a "sock" from gym.

Jan. 18—You can tell it's near time for Semester Exams — The worried looks on the students' faces.

Jan. 20—Lyceum number. Illustrated lecture on Arabia—"Jiggs" Rittenhouse proved to be a dignified sheik.

Jan. 22—Semester Exams—WHEW!

Jan. 25—Semester Exams—WHEW! again.

Jan. 26—John Marker appeared at school with an ugly cut by his eye—there must have been a cinder in that snowball, John.

Jan. 28—Marjorie Stuber missed her chair and sat on the floor in the shorthand room.

Feb. 3—You wouldn't think little Don Kitson was so big. He has to shove and jam all the assembly desks together to get his feet comfortably placed.

Feb. 4—Magician performed for the school today—many things disappeared—including Dorothy Arnold's ring.

Feb. 6—Bement brought home a well-earned trophy after winning the Okaw Valley Tournament—Are WE proud of the TEAM!



## Calendar

Feb. 16—A few country students didn't get through the big snow that we had last night.

Feb. 17—Why all the primping? That's it! Mr. Lindquist is going to take some pictures for the annual.

Feb. 23—Ninth hour class organized for the ones who hang around in the halls without any legitimate business. How quiet the halls suddenly became.

March 4—"Chalk" Taylor missed the bus and was late for the Lovington game.

March 8—Annual Staff had their picture taken—what a group!

March 12—Two of the ensemble groups played at Monticello for the County Teachers' Meeting..

March 20—Solo contest at Clinton—Bement received six first and three second prizes.

March 24—"Jim" Raglan got first in humorous readings in the county oratorical contest which was held in the auditorium.

April 3—District Band Contest at Clinton—We placed first in the second division.

April 8—Seniors entertained the Juniors with a party—What a time!

April 9—The County Festival, held at Cerro Gordo, presented 200 voices and a 200 piece band.

April 17—Bement, Arthur, and Sullivan held a track meet at Sullivan—Bement placed second—Pretty good for the first year.

April 20—Last of the lyceum numbers — Brown-Menely Musical Entertainers.

April 21-22—State Solo Contest at Urbana. We had four entries and we did right well!

April 23—Bement hosts to Atwood and Cerro Gordo for a track meet. Bement took first place.

April 29—Junior-Senior Banquet — Everybody was "dolled up" — And what a delightful visit to Holland it was!

May 7—Glee Club Concert held in the auditorium.

May 14—B. T. H. S. Band, under the direction of Mr. Alden H. Trickey, gave a concert in the auditorium.

May 20—The Seniors presented the "spooky" three act play, "The Bat in the Belfry."

May 23—Baccalaureate Service at High School Auditorium — Sermon by Rev. William Anderson.

May 25—Style Show! What a variety of pretty dresses!

May 26—Senior Class Day.

May 28—Commencement exercises. The curtain falls as this act of the drama of our education draws to a close—but it will rise again soon for many of us.



# Snaps





When in Decatur visit the . . . .

## Lindquist Salon of Photography

New modern ground floor studios especially constructed  
for large wedding, family groups and individual photog-  
raphy . . . . .

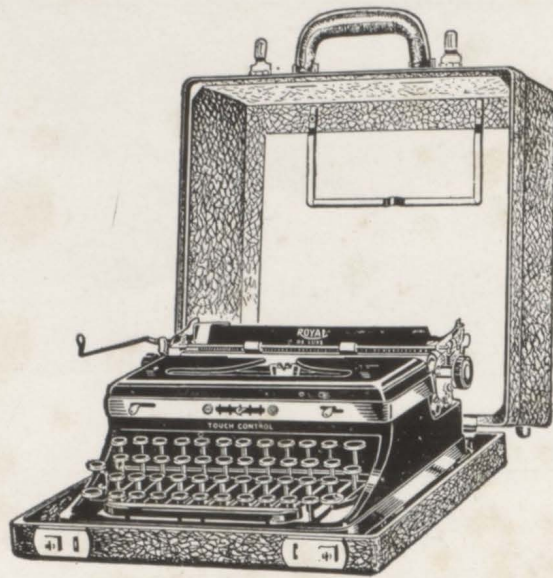
346 North Main St.

Phone 6365

Official Photographers

of Betohi Annual





*The World's  
Finest  
Portable*



**Royal**

Two Models

\$49.50

\$62.50

*Small Monthly  
Payments  
If Desired*

All Makes of Typewriters and Adding Machines  
Sold : Rented : Repaired

**Paxton Typewriter Company**

105 E. Front St.

Bloomington, Illinois

Quality

Service

**Herff-Jones Company**

Indianapolis, Indiana

Class Rings

Commencement Announcements

Jewelers and Stationers to  
BEMENT TOWNSHIP HIGH SCHOOL CLASSES

E. H. HALL

Decatur, Illinois



Congratulations .. .. .

**Betohi Staff**

from a

Home Business Institution

Calling Cards

Invitations

Announcements

---

*Complete Publication Service*

---

*The Bement Register*

---

---

*A Complete Planning and Engraving Yearbook Service*

*Indianapolis Engraving Company, Inc.*

:: School Publication Service ::

Indianapolis : Indiana

*Designers and Engravers of Yearbooks and School Publicity*

*Autographs*



